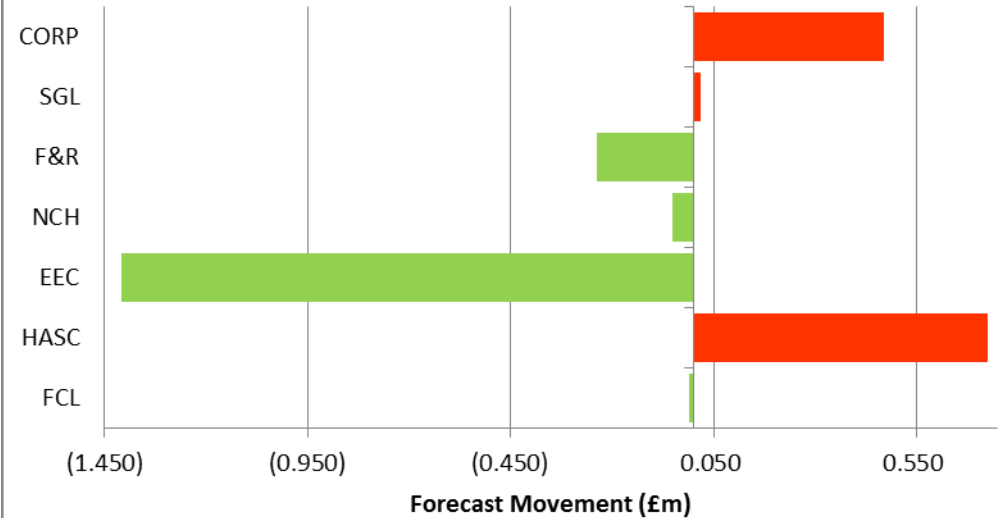


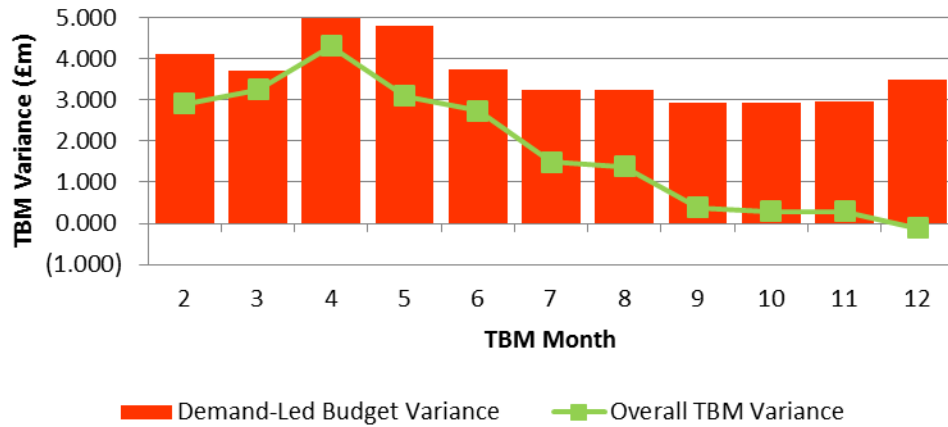
Direction of Travel

Directorate/Fund	Provisional Variance Month 12	Provisional Variance Month 12	Change From Month 9	RAG Rating Month 12
	£'000	%		
General Fund Services:				
Families, Children & Learning	(801)	-0.9%	↑	Green
Health & Adult Social Care	2,754	5.2%	↓	Red
Economy, Environment & Culture	(1,385)	-7.4%	↑	Green
Neighbourhood, Communities & Housing	(370)	-3.2%	↑	Green
Finance & Resources	(484)	-2.2%	↑	Green
Strategy, Governance & Law	(67)	-1.2%	↓	Green
Corporately-held Budgets	242	25.9%	↓	Red
Total General Fund	(111)	-0.1%	↑	Green
Dedicated Schools Grant (DSG)	(804)	-400.0%	↓	Green
Housing Revenue Account	(1,031)	0.0%	↑	Green

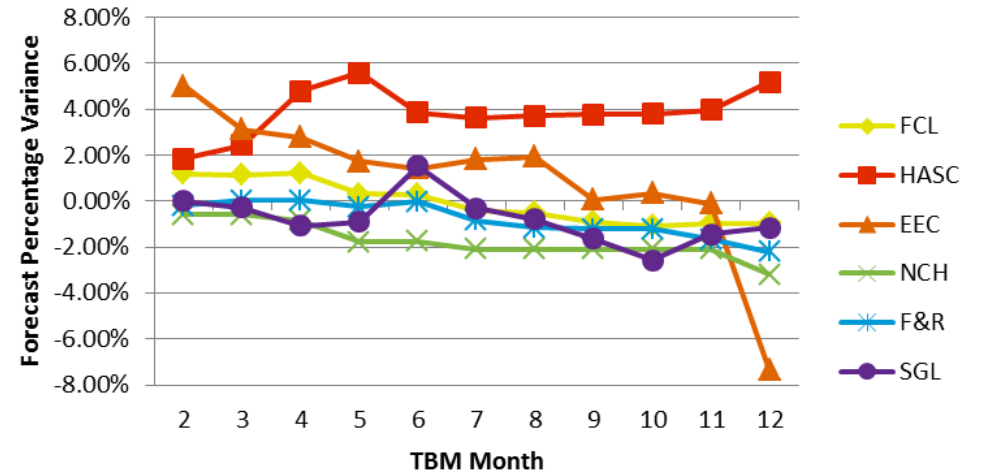
TBM Forecast Movement Month 9 to Month 12



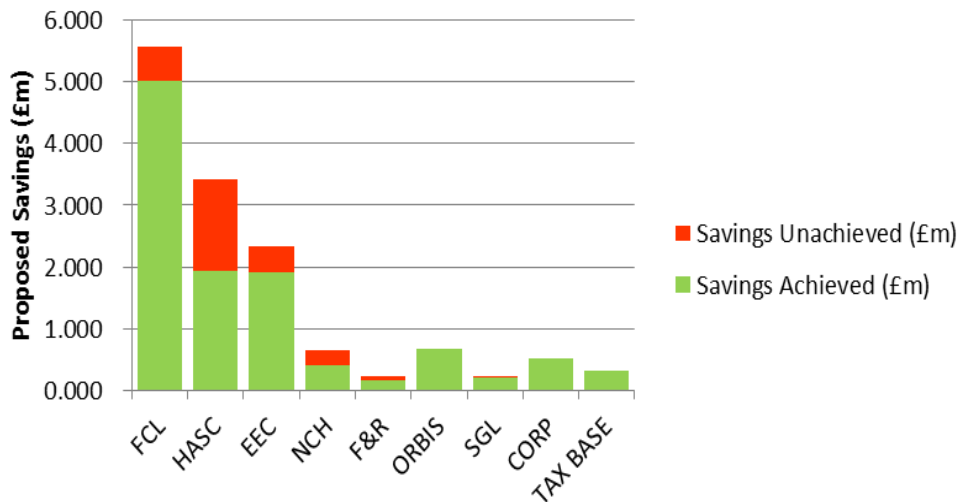
Demand-Led Variance Compared to Overall TBM Variance



Forecast Percentage Variance



Savings Monitoring



4-Year Budget Gaps (Savings Requirement) 2016/17 to 2019/20

